

BERMUDA GARDEN ESTATES

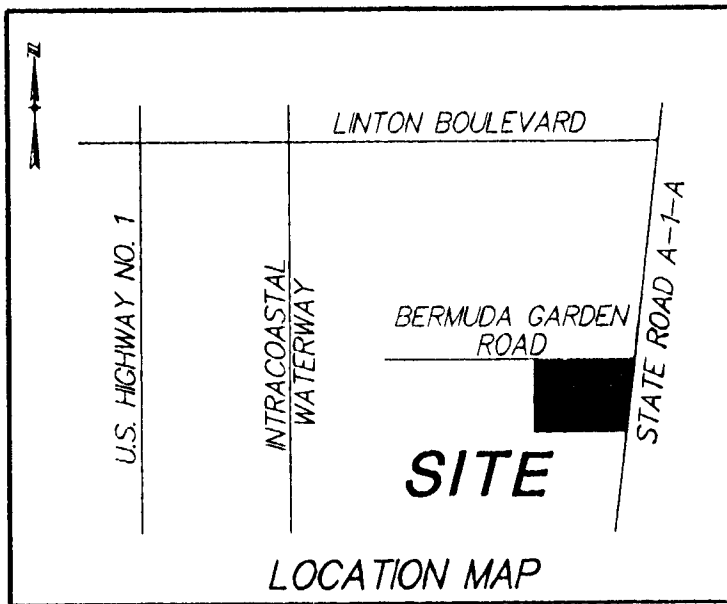
BEING A PORTION OF SECTION 28, TOWNSHIP 46 SOUTH, RANGE 43 EAST, CITY OF DELRAY BEACH, PALM BEACH COUNTY, FLORIDA

APRIL 2004
SHEET 2 OF 2

COUNTY OF PALM BEACH
STATE OF FLORIDA

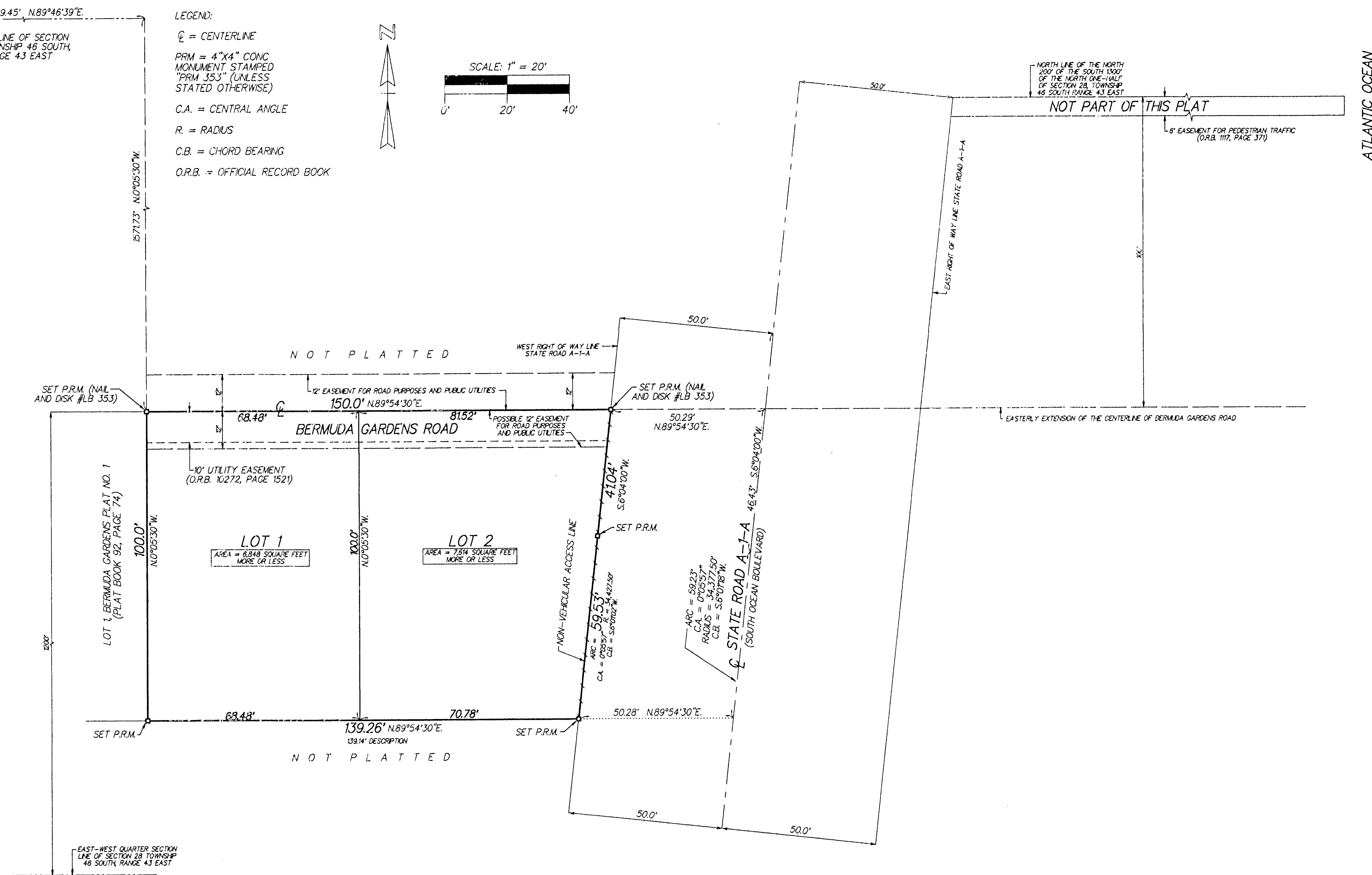
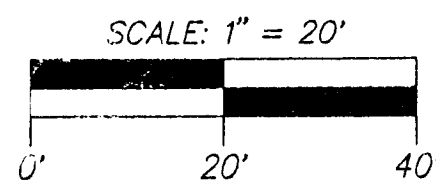
THIS PLAT WAS FILED FOR RECORD AT.....
THIS DAY OF
20..... AND DULY RECORDED IN PLAT BOOK NO.
ON PAGE
DOROTHY H. WILKEN, CLERK OF CIRCUIT COURT
BY DC

THIS INSTRUMENT WAS PREPARED BY PAUL D. ENGLE, IN THE OFFICE OF O'BRIEN, SUTER & O'BRIEN, INC., 2601 NORTH FEDERAL HIGHWAY, DELRAY BEACH, FLORIDA 33483 (561) 276-4501



N.W. CORNER OF SECTION 28, TOWNSHIP 46 SOUTH, RANGE 43 EAST
3069.45' N89°46'39"E
NORTH LINE OF SECTION 28, TOWNSHIP 46 SOUTH, RANGE 43 EAST

- LEGEND:
- CL = CENTERLINE
 - PRM = 4"x4" CONC MONUMENT STAMPED "PRM 353" (UNLESS STATED OTHERWISE)
 - C.A. = CENTRAL ANGLE
 - R. = RADIUS
 - C.B. = CHORD BEARING
 - O.R.B. = OFFICIAL RECORD BOOK



ATLANTIC OCEAN